





Contents

1. **Introductory Letter**
2. **About Us**
3. **Business Philosophy**
4. **Experience**
5. **Company Structure**
6. **Quality Assurance Statement**



Company Introduction

I would like to take this opportunity to introduce Abbey Plastering & Construction Services (PACS) Limited.

Abbey PACS are an award-winning specialist contractor currently specialising in all aspects of Partitioning, Drylining, Plastering, Steel Frame Systems, Suspended Ceilings, Insulated Render systems, and elements of internal finishing. We are also Firas accredited and are registered for passive fire protection of building steel frames, penetrations, seals and Intumescent products. Based in the North-West, our recent client base includes established contractors such as Caddick Construction, John Turner, Russells WBHO and Vistry Partnerships - Countryside Property, to name only a few. We have worked on various projects ranging from schools, hospitals, nursing homes, apartment blocks and housing developments.

We are accredited with Constructionline Gold, CHAS, SMAS, FIRAS and CQMS. We are also ISO9001 accredited and recently, won the ROSPA silver award. Our Health and Safety representative assists with all Quality Assurance, Health & Safety and Environmental Management; ensuring full company compliance with health and safety regulations and our clients' requirements.

Should our company be of interest, or if you would like to arrange a meeting where we could provide more in-depth information about what we do and how we do it, please do not hesitate to contact ourselves.

Alan Gerrard – Managing Director – alan@abbeypacs.com

Joe Dooley – Managing Director – joe@abbeypacs.com

Greg Roberts – Senior Quantity Surveyor – Greg@abbeypacs.com

Richard Platt – Quantity Surveyor – Richard@abbeypacs.com

If you could also pass our details onto any relevant parties within your organisation it would be much appreciated. Thank you for your time.

Yours faithfully,

For and on behalf of Abbey Plastering & Construction Services Ltd

Joseph Dooley

Managing Director

Joe@abbeypacs.com

About Us

Abbey Plastering and Construction Services Limited (AbbeyPACS) are a privately-owned company now entering our eighth year of operations. AbbeyPACS offer a complete supply and install service of all plastering finishes, rendering systems, partition and ceilings, SFS/Metsec systems; together with Fire protection including horizontal and vertical fire barriers, penetrations through partitions and intumescent coatings to structural steel. We can offer full design for SFS and partitions and ceilings. We can rewrite a K10; this can make big savings for our clients and is backed up our PI insurance.

We are located close to both the M57 and M62 motorways which gives us easy access to the booming construction industry within the city of Liverpool and easy access to motorway links for the north-west and further afield.

We run a quality management system and are accredited with ISO9001.

Key Contacts:

Joseph Dooley – Director –
Joe@abbeypacs.com



Alan Gerrard – Director –
Alan@abbeypacs.com



Greg Roberts – Senior Quantity Surveyor
Greg@abbeypacs.com

Richard Platt – Quantity Surveyor
Richard@abbeypacs.com



Merchant's Wharf – Legacie Developments

Mission Statement

“Become the sub-contractor of choice for our clients through a combination of competitive pricing and excellent customer service.”



*John Turner Construction – Birtenshaw School,
Bolton*

Business Philosophy

- Abbey Plastering and Construction Services Limited provide partition and plastering services for their clients.
- Abbey PACS have adopted a quality management system to ensure an effective and efficient use of its resources.
- All employees are committed to the culture of quality and health and safety.
- All staff share responsibility for identifying non-conformities or opportunities for improvement and recording these instances so that corrective or pre-emptive actions can be taken to ensure that we, as sub-contractors, can meet the needs of our client.

Website: abbeypacs.com/



Experience

The Directors, Alan and Joe, come from a trade background and each have over 20 years' experience in the industry.



Our Contract Managers have an extensive main contractor background, with experience of steel frame, concrete frame builds, with both new build and refurbishment projects.

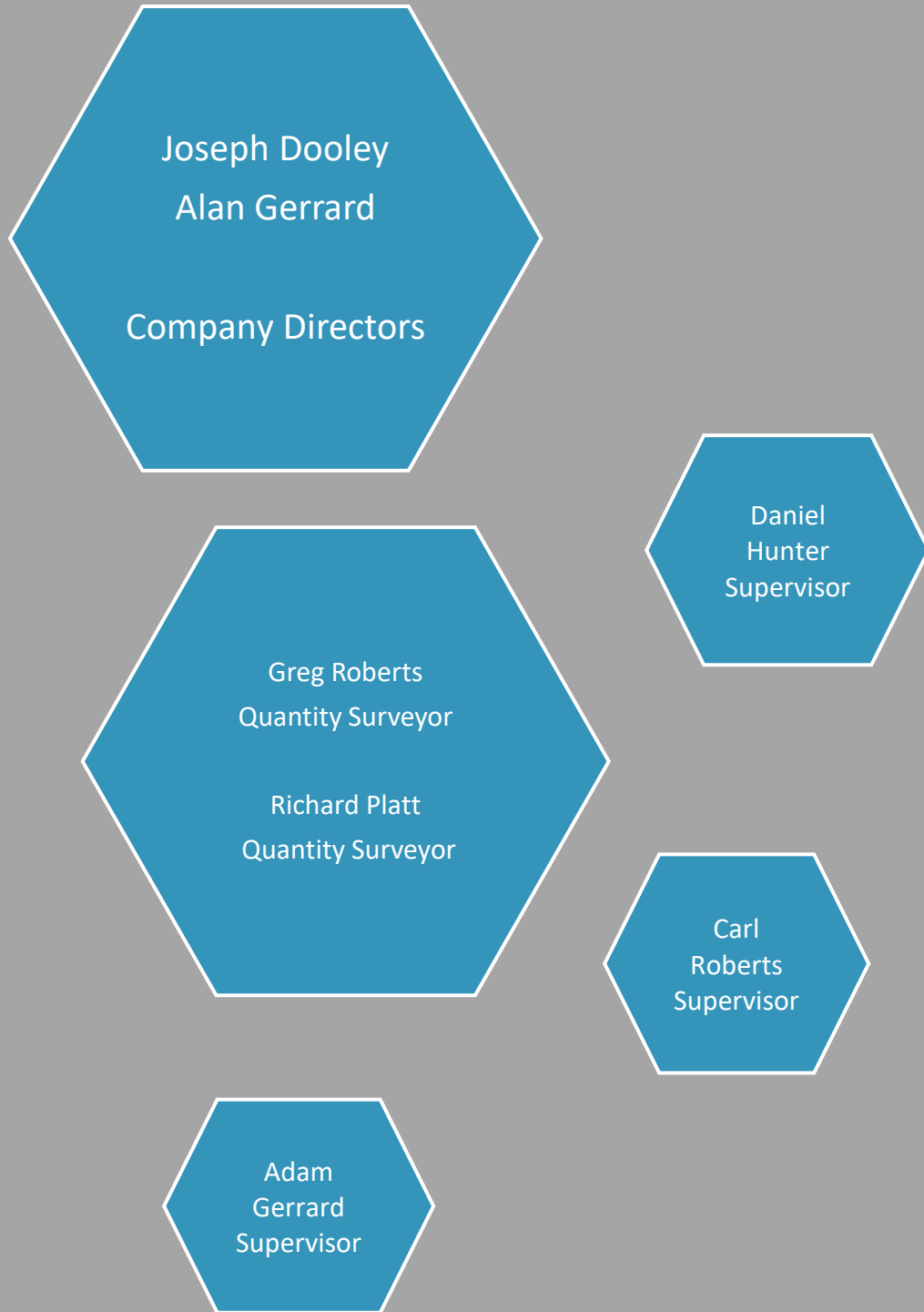
Our Senior Quantity Surveyor, Greg, comes from a main contractor background.

The company turnover for the last financial year was circa £4,000,000 and we are looking to increase this for the next financial year.



Municipal Buildings – Russells WBHO

Company Structure



Quality Assurance Statement

Abbey Plastering and Construction have created a Quality Management System for staff to understand and have reference to the processes used to achieve compliance with quality requirements and the requirements of ISO9001.



This document facilitates the implementation of the quality management system as well as ensuring its maintenance and updating at regular intervals and when circumstances require.

The document allows for and enables effective communication and control of quality related activities and as a documented base for quality system audits. It also informs our clients of our quality procedures and policies and provides a measure that our work is carried out to the highest standards and that a robust quality assurance process is in place.

Our aim is to become the most progressive sub-contractor possible for our clients by providing a competent service, requiring minimal supervision resource from the customer, and consistently producing a high-quality finish, on time and competitively priced.

Our commitment extends to ensuring that statutory and regulatory requirements, as well as those of our customers and ISO9001 are met at all times.

We are further committed to measure and monitor quality objectives and communicate the results throughout the business to continuously improve our performance. Our employees will recognise the company as the best organisation to work for and share these goals. This policy is itself kept under continuous review to ensure it remains relevant to the business.